



# WALK SERIES LANDSCAPE

2024 EDITION

REVISION 02



Breaking Strength  
≥2500N



Water Absorption  
1-3%



Abrasion Class  
4



Dry COF  
>0.74



Thickness  
11mm



Size  
100mmx100mm



21.0 kgs



0.88 m<sup>2</sup>



10mm

## Plaza Tile



**White**

Code : **ME-PT10-101A\***  
Surface : Structured  
Price/Piece : RM1.70  
Packing/ctn : 88 pieces



**Yellow**

Code : **ME-PT10-143A**  
Surface : Structured  
Price/Piece : RM1.80  
Packing/ctn : 88 pieces



**Livid**

Code : **ME-PT10-194**  
Surface : Structured  
Price/Piece : RM1.90  
Packing/ctn : 88 pieces



**Grey**

Code : **ME-PT10-135A\***  
Surface : Structured  
Price/Piece : RM1.80  
Packing/ctn : 88 pieces



**Himalayan Salt**

Code : **ME-PT10-193**  
Surface : Structured  
Price/Piece : RM1.80  
Packing/ctn : 88 pieces



**Black Sesame**

Code : **ME-PT10-195\***  
Surface : Structured  
Price/Piece : RM1.80  
Packing/ctn : 88 pieces

**Notes:**

(d) Packing configuration may vary from time to time.

\* Ready stocks for retailing subject to quantity availability at time of order.

Prices indicated subject to revision without prior notice.



Floor



Tile Shade  
V3



Breaking Strength  
≥2500N



Water Absorption  
1-3%



Abrasion Class  
4



Dry COF  
>0.74



Thickness  
11mm



Size  
150mmx150mm



21.5 kgs



0.9 m<sup>2</sup>



10mm



**White**

Code : **ME-PT15-501A**  
Surface : Structured  
Price/Piece : RM3.40  
Packing/ctn : 40 pieces



**Yellow**

Code : **ME-PT15-543A**  
Surface : Structured  
Price/Piece : RM3.60  
Packing/ctn : 40 pieces



**Livid**

Code : **ME-PT15-594A**  
Surface : Structured  
Price/Piece : RM3.80  
Packing/ctn : 40 pieces



**Grey**

Code : **ME-PT15-535A**  
Surface : Structured  
Price/Piece : RM3.60  
Packing/ctn : 40 pieces



**Himalayan Salt**

Code : **ME-PT15-593**  
Surface : Structured  
Price/Piece : RM3.60  
Packing/ctn : 40 pieces



**Black Sesame**

Code : **ME-PT15-595\***  
Surface : Structured  
Price/Piece : RM3.60  
Packing/ctn : 40 pieces

**Notes:**

(d) Packing configuration may vary from time to time.  
Prices indicated subject to revision without prior notice.



Wall



Floor



Tile Shade  
V3



Breaking  
Strength  
≥2500N



Water  
Absorption  
<1.0%



Abrasion  
Class  
4



Dry COF  
>0.4-0.7



Thickness  
14mm



Size  
100mmx200mm



13.5 kgs



0.44 m<sup>2</sup>



10mm



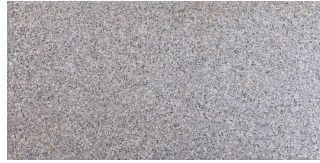
**Salt & Pepper White**

Code : **ME-PT1020-1000**

Surface : Matte

Price/Piece : RM5.10

Packing/ctn : 22 pieces



**Salt & Pepper Grey**

Code : **ME-PT1020-3000**

Surface : Matte

Price/Piece : RM5.20

Packing/ctn : 22 pieces



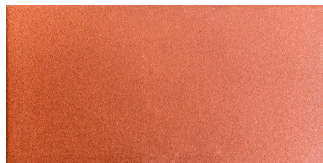
**Charcoal**

Code : **ME-PT1020-D2000**

Surface : Matte

Price/Piece : RM5.30

Packing/ctn : 22 pieces



**Terracotta**

Code : **ME-PT1020-4000**

Surface : Matte

Price/Piece : RM5.30

Packing/ctn : 22 pieces



**Salt & Pepper Yellow**

Code : **ME-PT1020-5000**

Surface : Matte

Price/Piece : RM5.60

Packing/ctn : 22 pieces



**Salt & Pepper Black**

Code : **ME-PT1020-2000**

Surface : Matte

Price/Piece : RM5.60

Packing/ctn : 22 pieces

**Notes:**

(d) Packing configuration may vary from time to time.  
Prices indicated subject to revision without prior notice.



Wall



Floor



Tile Shade  
V3



Breaking Strength  
≥2500N



Water Absorption  
<0.5%



Abrasion Class  
4



Dry COF  
>0.74



Thickness  
15mm



Size  
300mmx300mm



25.0 kgs

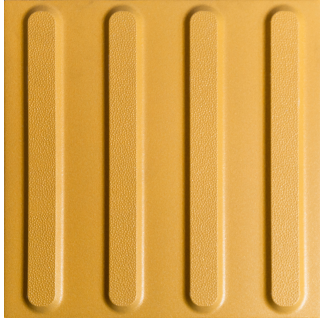


1.0 m<sup>2</sup>



5mm

## Tac Tile



### Yellow Directional

Code : ME-2989-D60

Price/Piece : RM18.00

Packing/ctn : 11 pieces



### Yellow Warning

Code : ME-2990-D61

Price/Piece : RM18.00

Packing/ctn : 11 pieces

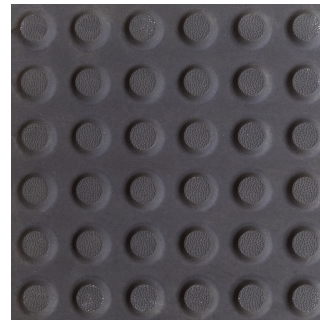


### Grey Directional

Code : ME-8992-D60

Price/Piece : RM18.00

Packing/ctn : 11 pieces

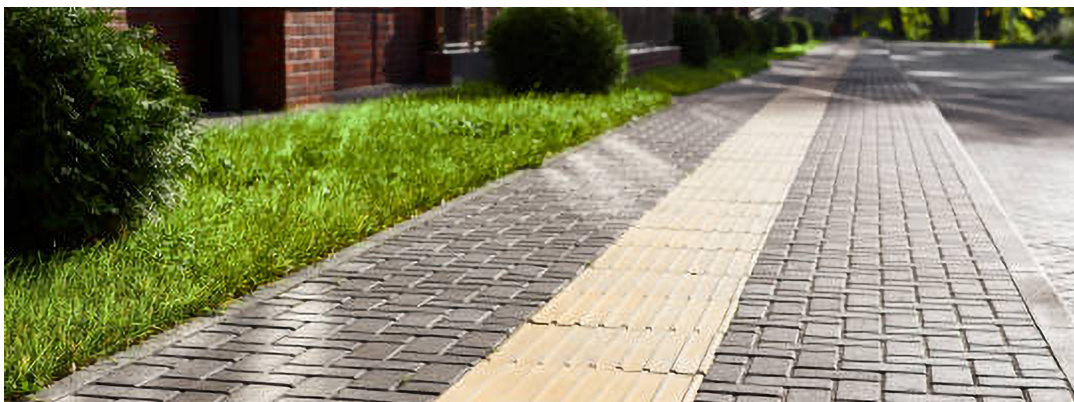


### Light Grey Warning

Code : ME-8993-D61

Price/Piece : RM18.00

Packing/ctn : 11 pieces



**Notes:**

(d) Packing configuration may vary from time to time.  
Prices indicated subject to revision without prior notice.



Floor



Tile Shade  
V3



**MOSAIC EXPERT SDN BHD**

*(200701027070 / 785091-X)*

📍 43B, Jalan Dendang Satu Off Jalan Batu Tiga, Pusat Bandar Berkeley, 41300 Klang, Selangor.

✉ [customerservice@mosaicexpert.com.my](mailto:customerservice@mosaicexpert.com.my)

🌐 [www.mosaicexpert.com.my](http://www.mosaicexpert.com.my)

☎ 03-3343 2101

📘 Mosaic Expert Sdn Bhd

📷 mosaicexpertsb